

**Programming display**

Main functions

- |                             |                                   |
|-----------------------------|-----------------------------------|
| Entering of access password | Opening speed adjustment          |
| Closing speed adjustment    | Anti break-in function management |
| Pause times adjustment      | Anti-crushing adjustment          |
| Diagnostic display          | Weekly calendar management        |

- Management of interlock with or without memory
- Selection of battery operation logics
- Configuration of 1 output on the control unit
- Configuration of 2 emergency inputs on the control unit
- Display of number of cycles carried out
- Management of 5 daily time slots



Programming display

**SD KEEPER functions keyboard**

Main functions

- |           |                  |
|-----------|------------------|
| Manual    | Open             |
| Automatic | Partial opening  |
| One way   | Night            |
| Reset     | One way, partial |

- Throubleshooting through a combination of flashing LEDs
- Operation can be disabled by a jumper or a combination of keys
- Preset for programming display



SD Keeper functions keyboard

**SDK light**

Available programs

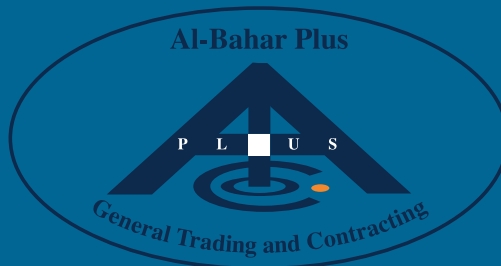
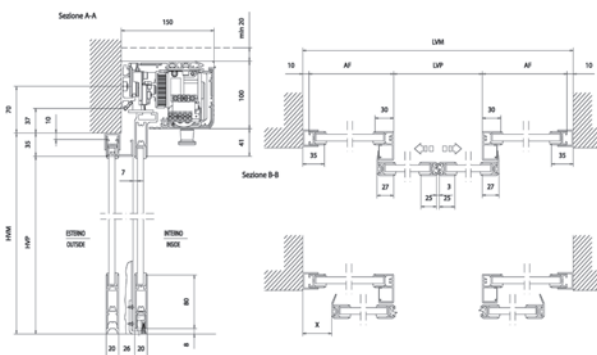
- |           |                 |
|-----------|-----------------|
| Manual    | Open            |
| Automatic | Partial opening |
| One way   | Night           |
| Reset     |                 |

- Throubleshooting through a combination of flashing LEDs
- Operation can be disabled by a combination of keys
- Not preset for programming display



SDK light functions keyboard

**Small section profile TK20**



**Al-Bahar Plus General Trading & Contracting Company W.L.L**  
Doors & Windows Sales Branch



Al-Shuwaikh Industrial Area, Block 5,  
Building 55-56 H, Shop 17  
Phone & Fax: (965) 24929244  
P.O.Box: 6342, Hawalli 32038 , KUWAIT  
E-mail : info@albaharplus.com

908462004 - Rev. 14 - 600 - Zue-chini - 05/2010 - For an on-going product improvement, FAAC S.p.A. reserves the right to make technical modifications without prior notice. All rights are reserved and the reproduction, in any form or by any means, of the whole or any part of this publication, is forbidden without prior permission of FAAC S.p.A.



**A100 COMPACT**  
Automations for sliding doors

**FAAC**  
*Simply automatic.*

## Automations for sliding doors

single leaf, two leaves with continuous duty

### Thin and elegant

Thanks to their compact dimensions, FAAC A100 COMPACT automations can be adapted to every type of architectural environment, even in limited space conditions. All the most innovative technical features in just a few centimetres. For the utmost versatility of use, the A100 COMPACT Series can be adapted to sliding doors with single leaves and a maximum weight of 110 kg or with double leaves and a maximum weight of 70 kg each leaf. An A100 COMPACT automation also guarantees considerable energy savings as regards air-conditioning and the total removal of architectural barriers.

### Reliable and always sliding

Designed to operate at best on each occasion and in every environment, A100 COMPACT automations are automatically reliable, without limits on the frequency of use. In the event of a power cut, buffer batteries (optional) with charge control guarantee 100% operation for thirty minutes.

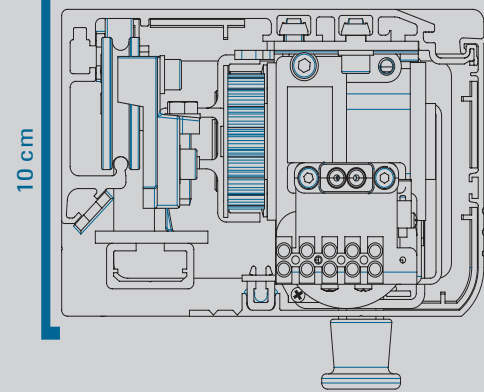
### Excellent logics in real time

A microprocessor verifies in real time all door activities and guarantees an intelligent control. The operation logics can be selected by means of a functions keypad.

### Absolute safety

The A100 COMPACT Series automatically programs opening and closing force and speed according to the friction and the door weight in conformity with the relevant international safety standards. In case of an obstacle the door reopens immediately. On the next closing it verifies at slow speed if the obstacle is still present.

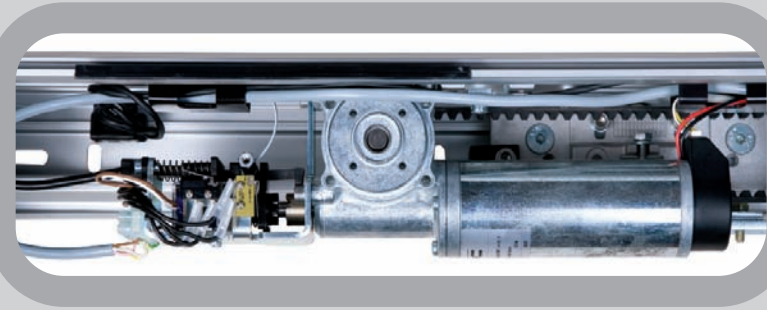
thinner than ever



10 cm

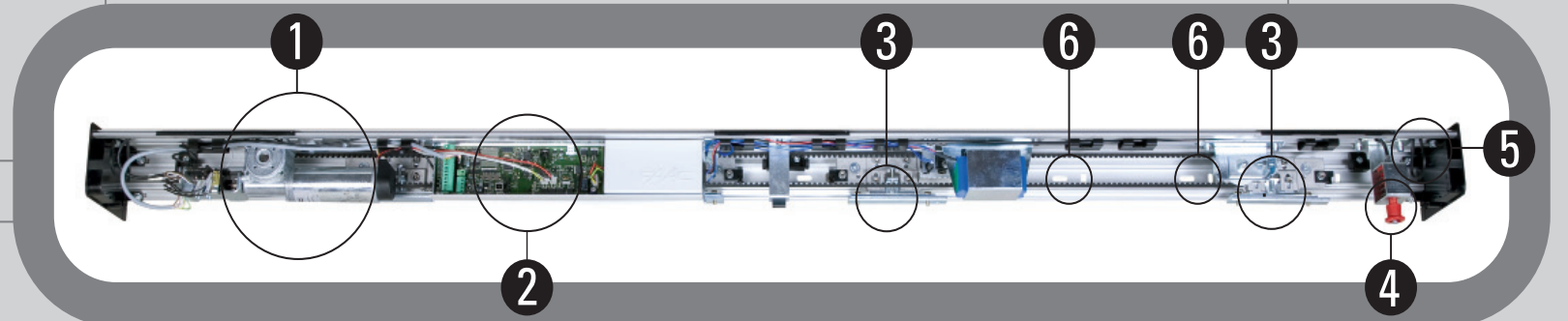
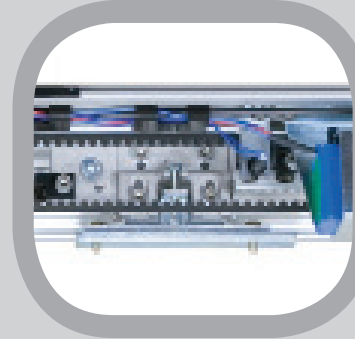


## 1 Motor with electrical lock



- 1 Motor with electrical lock
- 2 Control unit with switching power supply unit
- 3 Drive trolleys
- 4 Knob for manual release
- 5 "Parachute" device of front housing
- 6 Eyelets for a fast mechanical installation

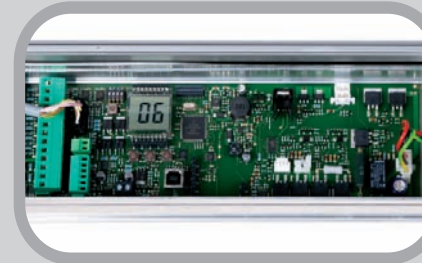
## 3 Drive trolleys



## Accessories

- Round photocell
- Infra-red passive sensor
- Microwave radar
- Keyswitches with emergency release devices
- Profiles for glass leaf fitting
- Electro-mechanical motor lock with manual release
- Motor lock monitoring
- Emergency batteries. They guarantee the automated system to operate for 30 minutes on continuous use**
- Break-out anti-panic kit**
- Compatible with the new series of FAAC TK20 and TK50 profiles**

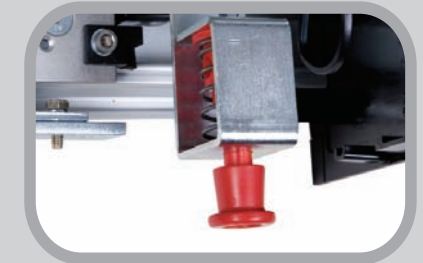
## 2 Control unit



Time slot programmable  
calendar management



## 4 Knob for manual release



## Technical specifications

## A100 Compact

Electric power supply	115/230 V ac - 50 (60) Hz
Power consumption	100 W
Frequency of use	100%
Drive unit	24 V dc motor with encoder
Head profile length	VP x 2 + 100 mm
Load free opening adjustment	5 ÷ 70 cm/s
Load free closing adjustment	5 ÷ 70 cm/s
Partial opening adjustment	10% ÷ 90% of total opening
Pause time adjustment	0 ÷ 30 s
Night pause time adjustment	0 ÷ 240 s
Anti-crushing device	standard
Photocells fail-safe	standard (can be excluded)
Protection class	IP 23 (for indoor use only)
Environmental temperature	-20°C ÷ +55°C

## Use

Model	Leaf	Free passage width (mm)	Leaf max. weight (kg)
A100 COMPACT 1	single	700-3000	110
A100 COMPACT 2	double	800-3000	70+70